

## FOR RETAIL, RESIDENTIAL AND FURNITURE LIGHTING



### SURFACE KIT WITH MOUNTED LED SPOT

The shapely metal frame with mounted LED spot is an ideal solution for quick installation of an surface mounted spot.

There are optional LEDSpots of series ILine (IP54), SmartLine and StartLine available.

The frame could be equipped with two single-pole terminal blocks for easy connection and will be fixed with self-tapping screws.

#### Typical Applications

Surface-mounted luminaire/general illumination:

- Retail lighting
- Residential lighting
- Furniture lighting



#### Surface Kit for LEDSpots

- METAL FRAMES, WHITE OR SILVER
- WITH TERMINAL BLOCKS IN FRAME
- HIGH QUALITY LED SPOTS

## Surface Kit with Mounted LEDSpot

Metal frame to use IPLine, SmartLine or StartLine as surface mounting spots

Two single pole terminals for electrical connection inside the kit (frame + spot)

Fixation by self tapping screws

Unit: 90 pcs.

**Ref. No.: 554845** Frame colour: white

**Ref. No.: 554843** Frame colour: silver



### Surface Kit with LEDSpot StartLine

Colour temperature: 3000 K

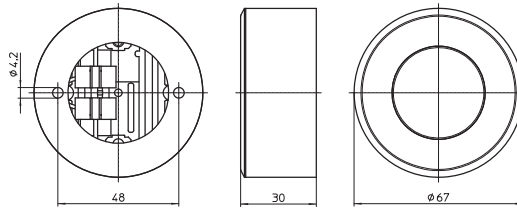
Beam angle: 40°

Unit: 1 pcs.

Type: StartLine SFK LCH016

**Ref. No.: 557621** Frame colour: white

**Ref. No.: 557157** Frame colour: silver



### Surface Kit with LEDSpot SmartLine

Colour temperature: 3000 K

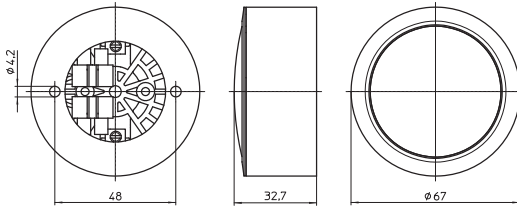
Beam angle: 50°

Unit: 1 pcs.

Type: SmartLine SFK LCH002

**Ref. No.: 557158** Frame colour: white

**Ref. No.: 557622** Frame colour: silver



### Surface Kit with LEDSpot IPLine

Colour temperature: 4500 K

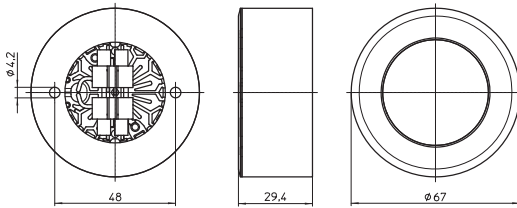
Beam angle: 30°

Unit: 1 pcs.

Type: IPLine SFK LCH022

**Ref. No.: 559624** Frame colour: white

**Ref. No.: 559623** Frame colour: silver



Type	Description	Ref. No.	Colour	Correlated colour temp. (K)	Luminous flux* (lm) at						Light intensity 700 mA Candela	Beam angle °	Energy efficiency
					350 mA		500 mA		700 mA				
					min.	typ.	min.	typ.	min.	typ.			
<b>Surface Kit with LEDSpot StartLine</b>					P <sub>el</sub> = 1.02 W		P <sub>el</sub> = 1.49 W		P <sub>el</sub> = 2.17 W				
					U <sub>typ.</sub> = 2.9 V		U <sub>typ.</sub> = 3 V		U <sub>typ.</sub> = 3.1 V				
StartLine SFK LCH016	XBD Min Q2	<b>557157/559621</b>	warm white	2870...3200	74.3	82.5	96.6	107.2	127.8	141.8	160	40	A+
<b>Surface Kit with LEDSpot SmartLine</b>					P <sub>el</sub> = 0.98 W		P <sub>el</sub> = 1.48 W		P <sub>el</sub> = 2.17 W				
					U <sub>typ.</sub> = 2.8 V		U <sub>typ.</sub> = 3 V		U <sub>typ.</sub> = 3.1 V				
SmartLine SFK LCH002	XTE 3000K bin Q3	<b>557158/559622</b>	warm white	2870...3200	79.8	88	103.7	114.4	135.7	149.6	210	50	A+
<b>Surface Kit with LEDSpot IPLine</b>					P <sub>el</sub> = 0.98 W		P <sub>el</sub> = 1.48 W		P <sub>el</sub> = 2.17 W				
					U <sub>typ.</sub> = 3.5 V		U <sub>typ.</sub> = 3 V		U <sub>typ.</sub> = 3.1 V				
IPLine SFK LCH022	XTE 4500K bin Q5	<b>559623/559624</b>	neutral white	4250...4750	91	100.3	121	133.4	161.7	178.7	190	30	A++

\* Measurement tolerance of luminous flux: ± 7% | Emission data at t<sub>i</sub> = 85 °C