

## LEDspot StartLine

**Complete LEDspot equipped with optics, heat sink, leads and frame**

### Technical notes

Steel frame: round

For cut-out:  $\varnothing$  56 mm

LEDspot with one LED and with thermoplastic heat sink

Optics beam angle: 20° or 40°

Colour accuracy initially: 3 SDCM

CRI: 80

Leads: Cu tinned, stranded conductors 0.5 mm<sup>2</sup>,

PVC-insulation, length: 250 mm

Use of external LED constant-current drivers

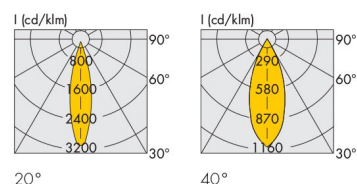
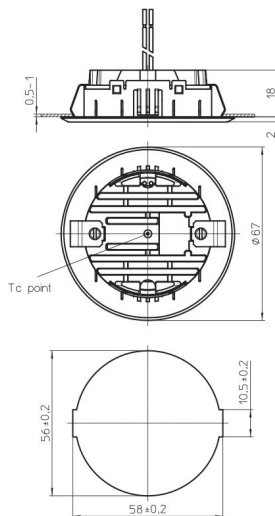
Snap-in clips for easy installation

Degree of protection: IP20

Weight: 40 g

Packaging unit: 45 pcs.

**LCH-016**



Type	Description	LEDspot version	Colour	Correlated colour temperature K	Luminous flux (lm) and typical voltage (U <sub>typ.</sub> ) and power consumption (P <sub>el</sub> )*						light intensity at max. current Candela		Energy efficiency at max. current
					350 mA		500 mA		700 mA		20°	40°	
					min.	typ.	min.	typ.	min.	typ.			
					P <sub>el</sub> = 1.02 W U <sub>typ.</sub> = 2.9 V		P <sub>el</sub> = 1.5 W U <sub>typ.</sub> = 3 V		P <sub>el</sub> = 2.16 W U <sub>typ.</sub> = 3.09 V				
LCH-016	Start 219 3000K	<b>A</b>	warm white	3000	90	100	130	140	170	180	550	190	A++
LCH-016	Start 219 4500K	<b>B</b>	neutral white	4500	100	110	140	150	180	190	580	250	A++

Emission data at  $t_1 = 85 \text{ }^\circ\text{C}$  | \* Production tolerance of luminous flux, voltage and power consumption:  $\pm 7\%$  | Further colour temperatures on request

Frame colour	Ref. No.		Ref. No.	
	<b>A</b> (warm white) 20°	40°	<b>B</b> (neutral white) 20°	40°
silver	<b>561799</b>	<b>561801</b>	<b>561803</b>	<b>561805</b>
white	<b>561800</b>	<b>561802</b>	<b>561804</b>	<b>561807</b>

Silver brushed or further colours on request

The values contained in this data sheet can change due to technical innovations. Any such changes will be made without separate notification.